

Bison Innovative Products

1975 West 13th Avenue
Denver, CO 80204 USA
BisonIP.com
info@BisonIP.com

Phone 303.892.0400
Toll Free 800.333.4234
Fax 303.825.5988



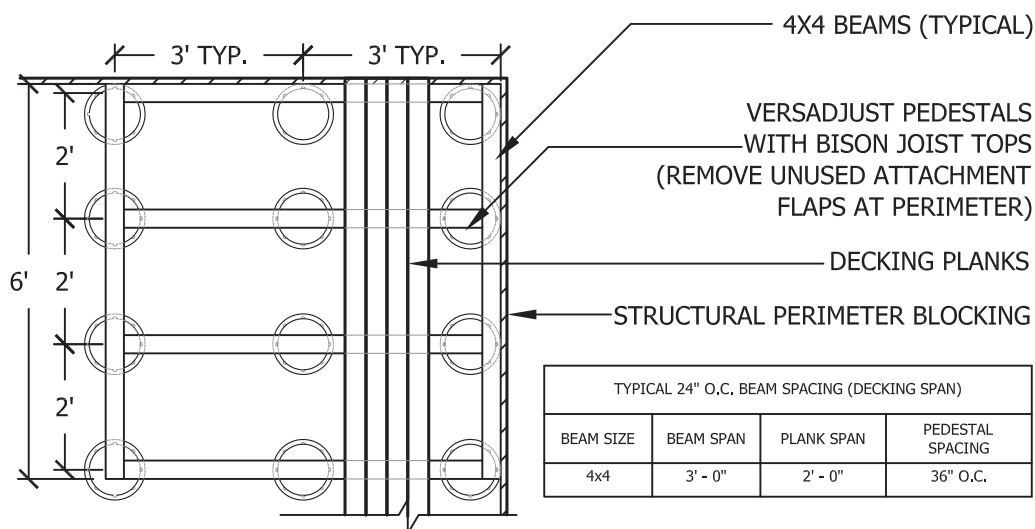
VERSADJUST
Adjustable Deck Supports

Get CEU Credits, Details, Specifications online at BisonIP.com

BISON JOIST TOP DETAILS WITH DECK PLANKING

GENERAL NOTES

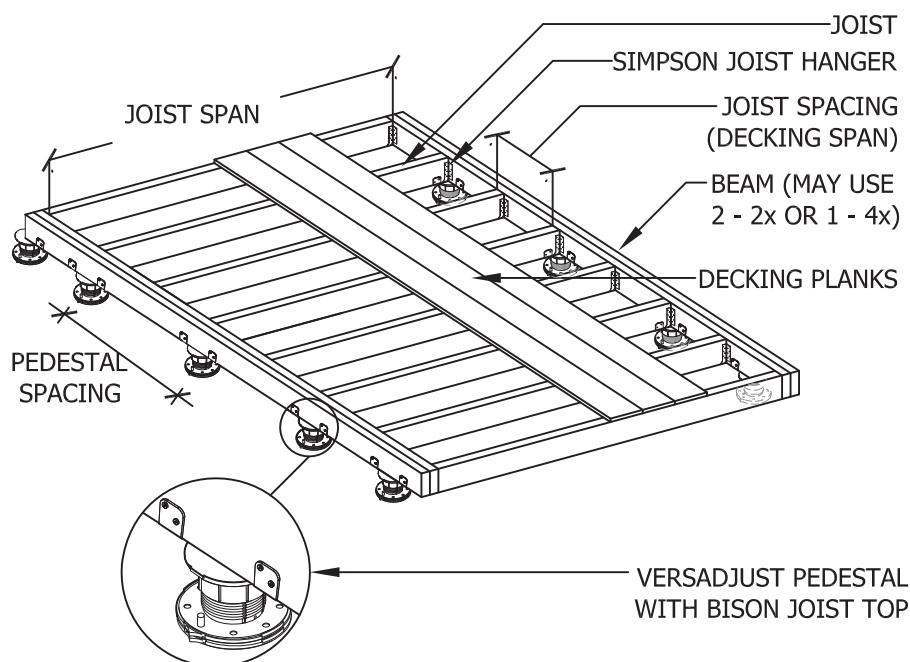
1. FIRST MECHANICALLY FASTEN JOIST TOP TO TOP OF PEDESTAL USING BISON PROVIDED SCREW.
2. WOOD JOISTS OR BEAMS ARE INSTALLED ON TOP OF THE PEDESTALS.
3. FOLD FLAPS AROUND JOIST OR BEAM AND MECHANICALLY FASTEN WITH WOOD SCREWS.



TWO WAY BEAM DETAIL- SAMPLE BISON PEDESTAL WITH IPE PLANK LAYOUT

TYPICAL 12" O.C. JOIST SPACING (DECKING SPAN)			
JOIST SIZE	JOIST SPAN	BEAM SIZE	PEDESTAL SPACING
2x6	10' - 0"	4x6 OR (2) 2x6	24" O.C.
2x8	13' - 2"	4x8 OR (2) 2x8	24" O.C.
2x10	16' - 10"	4X10 OR (2) 2x10	24" O.C.
TYPICAL 16" O.C. JOIST SPACING (DECKING SPAN)			
JOIST SIZE	JOIST SPAN	BEAM SIZE	PEDESTAL SPACING
2x6	9' - 1"	4x6 OR (2) 2x6	24" O.C.
2x8	12' - 0"	4x8 OR (2) 2x8	24" O.C.
2x10	15' - 2"	4X10 OR (2) 2x10	24" O.C.
TYPICAL 24" O.C. JOIST SPACING (DECKING SPAN)			
JOIST SIZE	JOIST SPAN	BEAM SIZE	PEDESTAL SPACING
2x6	7' - 11"	4x6 OR (2) 2x6	24" O.C.
2x8	10' - 2"	4x8 OR (2) 2x8	24" O.C.
2x10	12' - 5"	4X10 OR (2) 2x10	24" O.C.

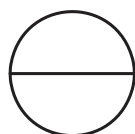
*** CHARTS ARE SHOWN USING HEM-FIR #2 LUMBER OR BETTER.



JOIST AND PLANK LAYOUT

GENERAL NOTES: APPLY TO ALL OF THE ABOVE PRODUCTS

1. INSTALLATION MUST BE COMPLETED IN ACCORDANCE WITH BISON INNOVATIVE PRODUCTS SPECIFICATIONS.
2. DRAWINGS NOT TO SCALE.
3. CONTRACTOR'S NOTE: FOR PRODUCT AND COMPANY INFORMATION VISIT www.BisonIP.com



BISON JOIST TOP PLANKING DETAILS

SAMPLE JOIST AND PLANK